

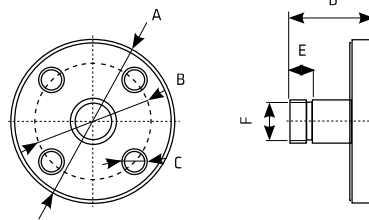
# FA

## FLANGE ADAPTER



### DESCRIPTION

Flange adapter FA is designed for all products and devices which cannot be connected to the pipeline without flanges such as: filter housings, condensate drains, dryers, valves, .... The product is made of male pipe thread which can be screwed to the female connection and the flange which can be coupled to another flange. The Flange adapter FA is completely protected from corrosion with zinc coating.



TECHNICAL DATA									
Type	Flange size <sup>(1)</sup>	Pressure rating	Dimensions [mm]					Mass [kg]	
			A	B	C	D	E		F
FA 15-16	DN15	PN16	95	65	4 × ø14	65	15	G 1/2	0,7
FA 15-63		PN63	105	75	4 × ø14	65	15		1,1
FA 20-16	DN20	PN16	105	75	4 × ø14	65	15	G 3/4	1,0
FA 20-16		PN63	130	90	4 × ø18	65	15		1,4
FA 25-16	DN25	PN16	115	85	4 × ø14	65	17	G 1	1,2
FA 25-63		PN63	140	100	4 × ø18	65	17		1,8
FA 32-16	DN32	PN16	140	100	4 × ø18	85	17	G 1 1/4	2,1
FA 32-63		PN63	155	110	4 × ø22	85	17		2,7
FA 40-16	DN40	PN16	150	110	4 × ø18	95	19	G 1 1/2	2,4
FA 40-63		PN63	170	125	4 × ø22	95	19		3,2
FA 50-16	DN50	PN16	165	125	4 × ø18	105	21	G 2	3,2
FA 50-63		PN63	180	135	4 × ø22	105	21		4,5
FA 65-16	DN65	PN16	185	145	4 × ø18	105	21	G 2 1/2	3,7
FA 65-63		PN63	205	160	8 × ø22	105	21		5,2
FA 80-16	DN80	PN16	200	160	8 × ø18	105	21	G 3	4,7
FA 80-63		PN63	215	170	8 × ø22	105	21		7,4

<sup>(1)</sup> Standard flange EN 1092-1, other pipe connection on request.

# SG

## SIGHT GLASS



### DESCRIPTION

Sight glass has been developed to easily check the level of accumulated condensate at the bottom of a compressed air filter.

Every cast aluminium filter housing has a pre-cast area where the sight glass can be mounted after appropriate holes are drilled.

TECHNICAL DATA	
TYPE	SG
Operating pressure	0 to 16 bar (0 to 232 psi)
Operating temp.	1,5 to +65 °C (35 to 149 °F)
Operating fluid	Air, water, oil
Mass (kg)	0,010
Material	PA12
Dimensions (mm)	59,0 x 20,5 x 11,0

# ES

## EXHAUST SILENCER



### DESCRIPTION

**ES series** expansion silencers are designed for efficient noise reduction at variety of applications where compressed air is expanded/ depressurised to ambient pressure.

**ES B series** - exhaust silencers with bypass valves are available as an option. The bypass valve is designed to protect silencer from overload. It is positioned on the other side of the inlet port. The valve opens when the pressure in the silencer exceeds the limited value. The bypass valve is triggered by a spring-loaded mechanism.

**ES E and ES BE series** - version with nipple connection

TECHNICAL DATA								
Type		Connection	Flow capacity		Operating pressure	Operating temp.	Dimensions	
Standard version	Pressure relief option		Nm <sup>3</sup> /h	scfm			ø [mm]	h [mm]
ES 06050	ES 06050 B	1/4"	190	118	0 to 16bar	1,5 to +65 °C	51	70
ES 14050	ES 14050 B	3/8"	420	262			51	127
ES 12075	ES 12075 B	1/2"	850	530			75	130
ES 22075	ES 22075 B	3/4"	1.820	1.134			75	230
ES 22090	ES 22090 B	1"	2.310	1.440			90	233
ES 32090	ES 32090 B	1 1/4"	4.550	2.835			90	333
ES 32140	ES 32140 B	1 1/2"	6.370	3.970			140	336
ES 45140	ES 45140 B	2"	11.200	6.970			140	475

Versions ES E and ES BE are equipped with external thread connection.