

# AOK 20SS

## AUTOMATIC CONDENSATE DRAIN

operating pressure	<b>20 bar</b>
drain capacity	<b>167 l/h</b>
connections	<b>1/2"</b>
operating temp. range	<b>1,5 to 65 °C</b>

### APPLICATIONS

- air compressor (piston or screw)
- after-cooler
- cyclone condensate separator
- pressure vessel/air tank
- air dryer
- air filter

### DESCRIPTION

AOK20 SS has is designed for fully automatic discharging of condensate or any other non-aggressive fluid from compressed air<sup>(1)</sup> system. The unit can be installed as external drain on any application specified below.

Condensate accumulates in the aluminium reservoir and when the level is high enough condensate is being discharged from the system without any air losses. Direct acting valve is operated by precise level controlled floater which assures reliable and efficient operation.

Thanks to robust stainless steel housing AOK20 SS is suitable for heavy duty applications. AOK20 SS is also equipped with separate manual drain for venting.

<sup>(1)</sup>For any other technical gas please contact producer or your local distributor.



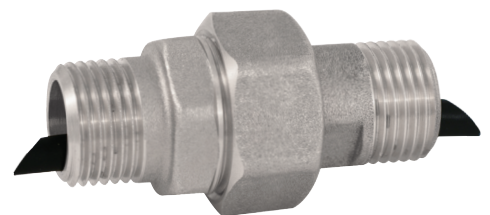
### RECOMMENDATIONS

Install ball valve between pressure vessel and inlet connection.

Install strainer element between pressure vessel and inlet connection.

Install nipple with venting tube to avoid generation of air bubbles.

Nipple is screwed in inlet connection.



TECHNICAL DATA	AOK 20 SS
Operating temperature range	1,5 - 65 °C (35-149 °F)
Operating pressure	0-20 bar (0-290 psi)
Min. recommended operating pressure	1,5 bar(g) (21,8 psi)
Mass	4,5 kg
Discharge capacity (at 7 bar/101 psi)	167 l/h (at 7 barg) 252 l/h (at 16 barg)
Inlet connection	G 1/2" (NPT on request)
Outlet connection	G 1/2" (NPT on request)
Dimensions A x B x C	135 x 110 x 130
Medium	Condensate (air, water, oil); non aggressive

