

# ACW SERIES

## WATER COOLED AFTERCOOLERS

operating pressure	<b>0 to 16 bar</b>
operating temp.range	<b>1,5 to 200 °C</b>

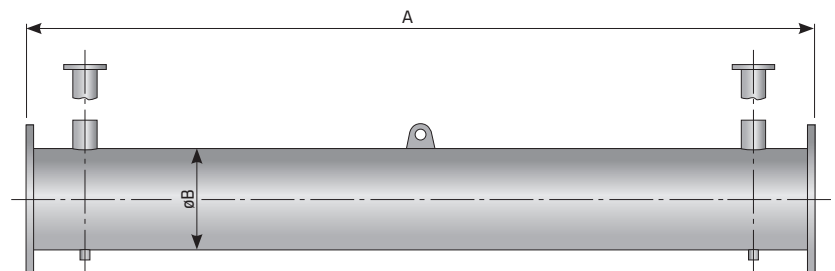
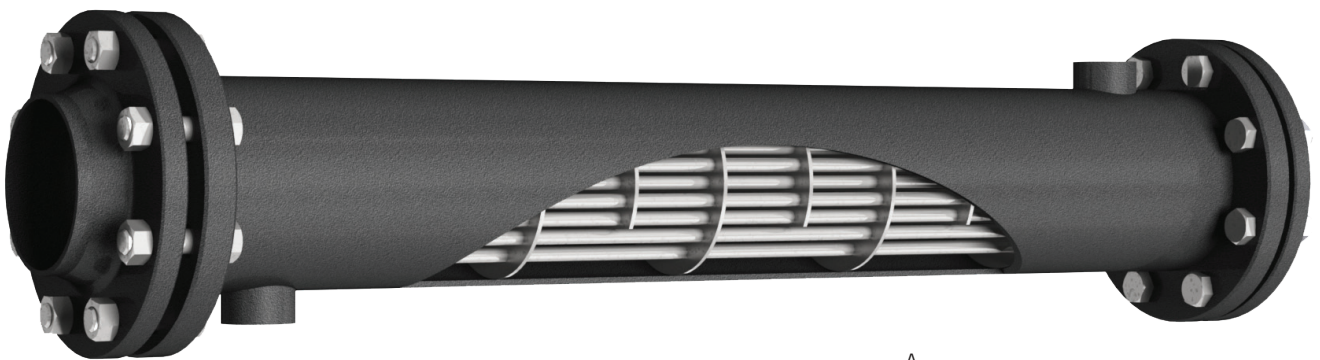
### APPLICATIONS

- Automotive
- Electronics
- Food & Beverage
- Chemical
- Petrochemical
- Plastics
- Paint
- General industrial application

### DESCRIPTION

ACW - Water-cooled aftercooler series has been designed to reduce compressed air temperature thus water vapour content in compressed air system. Hot compressed air/gas passes through the tubes. Cooling water passes around the tubes in counter flow.

ACW aftercooler ensures the maximum performance and protection of all equipment, such as refrigeration dryers, adsorption dryers and filters, positioned downstream of this unit.



### TECHNICAL DATA

Model	Connections		Flow capacity <sup>1)</sup>		Operating pressure	Dimensions		
	fixed bundle	Air	Water	Nm <sup>3</sup> /h		scfm	bar	A [mm]
ACW 010 F		DN50	DN20	132	78	0 - 16	806	60,3
ACW 018 F		DN50	DN20	235	138	0 - 16	816	60,3
ACW 030 F		DN50	DN20	367	216	0 - 16	816	60,3
ACW 047 F		DN50	DN20	661	389	0 - 16	870	60,3
ACW 070 F		DN50	DN20	955	562	0 - 16	870	60,3
ACW 094 F		DN80	DN20	1323	779	0 - 16	1500	88,9
ACW 150 F		DN80	DN20	2205	1298	0 - 16	1510	88,9
ACW 240 F		DN125	DN32	3087	1817	0 - 16	1300	139,7
ACW 300 F		DN125	DN32	3969	2336	0 - 16	1300	139,7
ACW 450 F		DN200	DN50	7056	4153	0 - 16	1300	219
ACW 600 F		DN200	DN65	8967	5278	0 - 16	1300	219
ACW 900 F		DN250	DN80	11025	6489	0 - 10	1300	273
ACW 1200 F		DN300	DN80	16170	9517	0 - 10	1300	323,9
ACW 1500 F		DN400	DN100	22050	12978	0 - 10	1300	406
ACW 1800 F		DN400	DN150	26460	15574	0 - 10	1300	406
ACW 2500 F		DN450	DN200	33810	19900	0 - 10	1300	457
ACW 3000 F		DN500	DN200	45570	26821	0 - 10	1300	508

<sup>1)</sup> Refers to 1 bar and 20°C at 7 bar operating pressure and inlet temperature 120°C